

# Classy class IV restorations

Lecture and hands-on course  
AACD 2012

*Danièle Larose, DMD*

*\*All materials for the hands-on portion were  
graciously provided by Cosmedent*

CI.IV



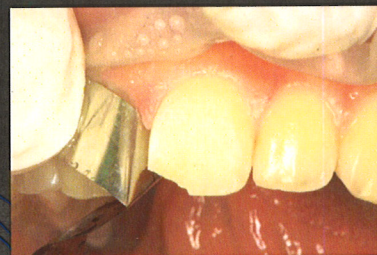
Long bevel on facial

CI.IV

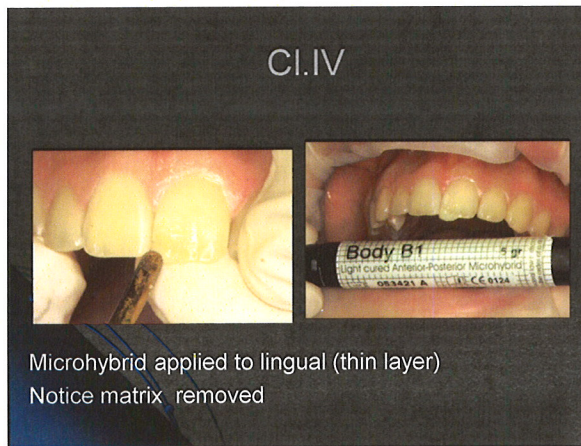
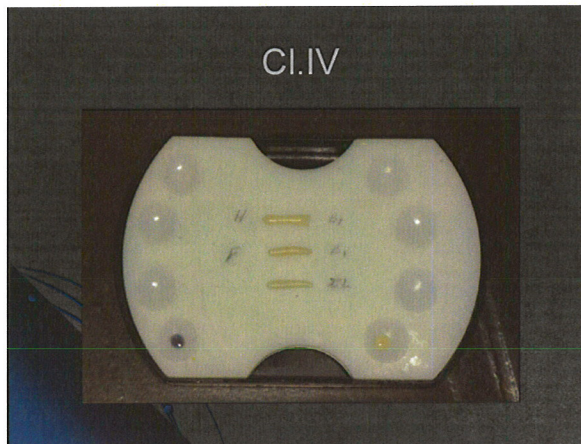
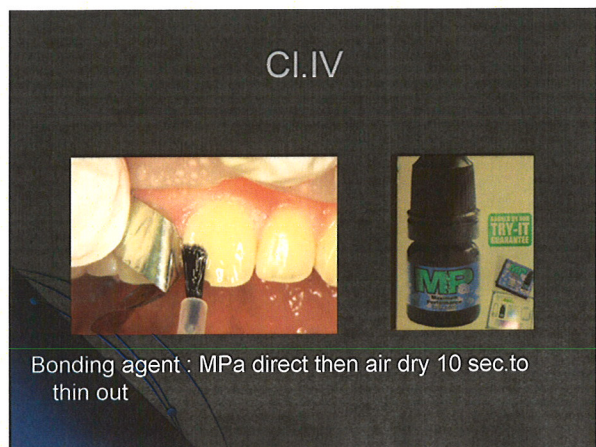


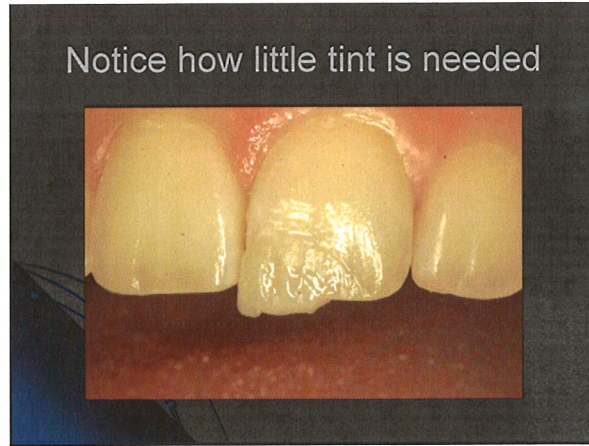
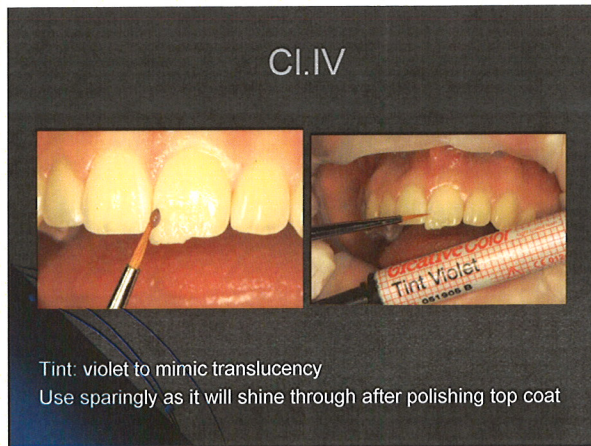
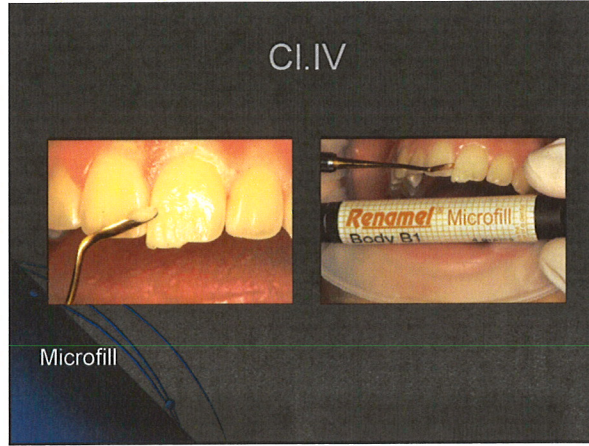
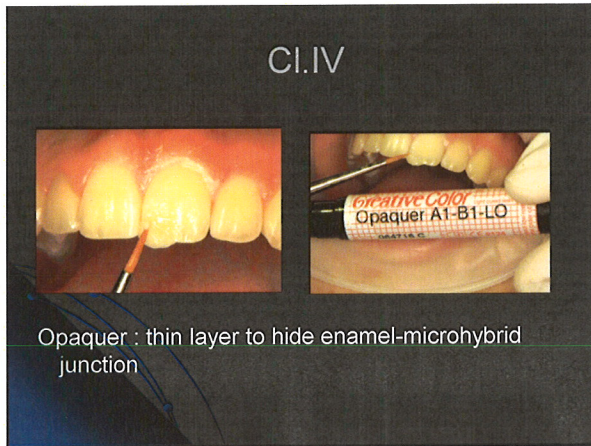
Etching past long bevel with matrix

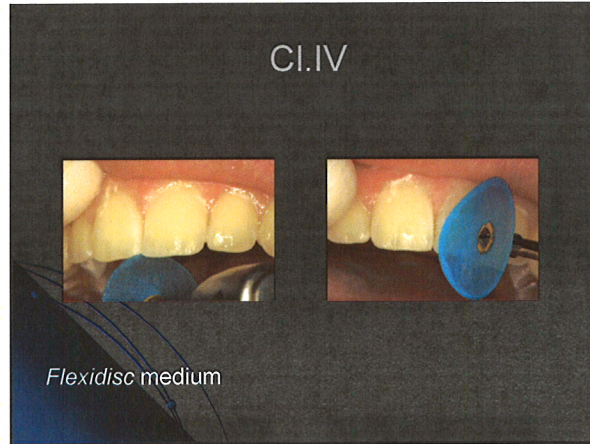
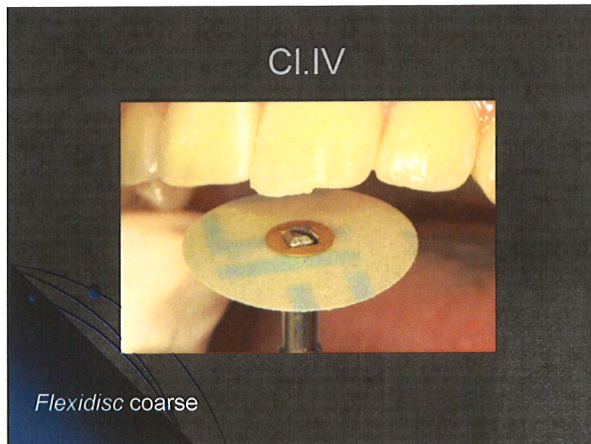
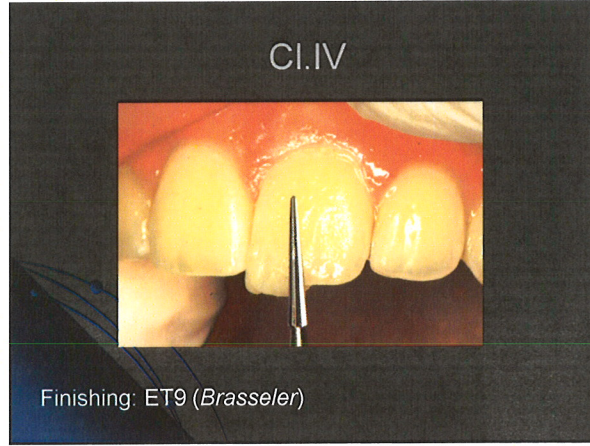
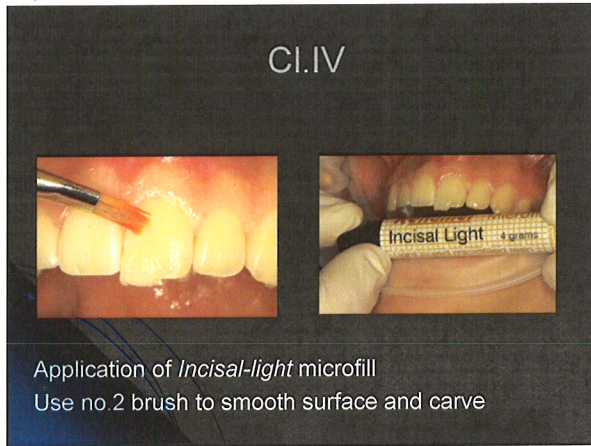
CI.IV

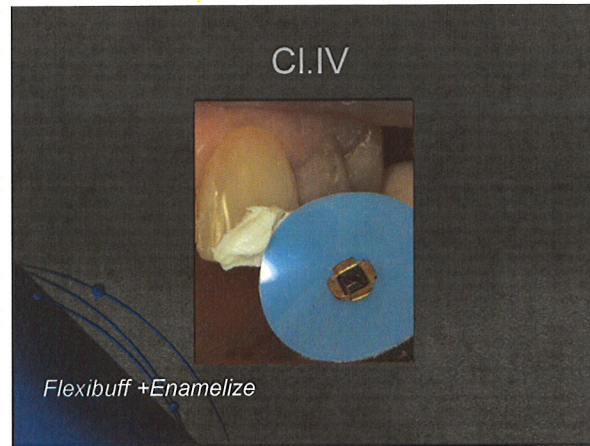
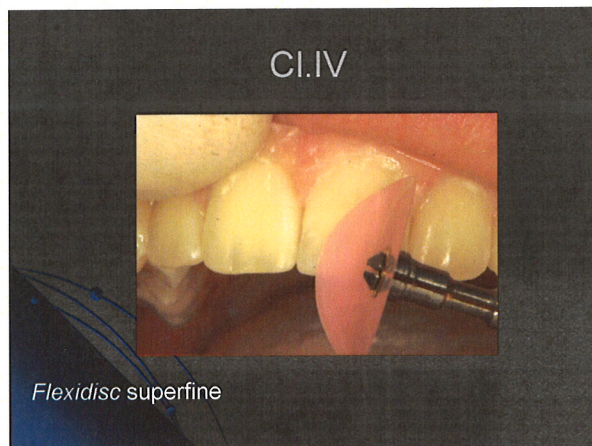
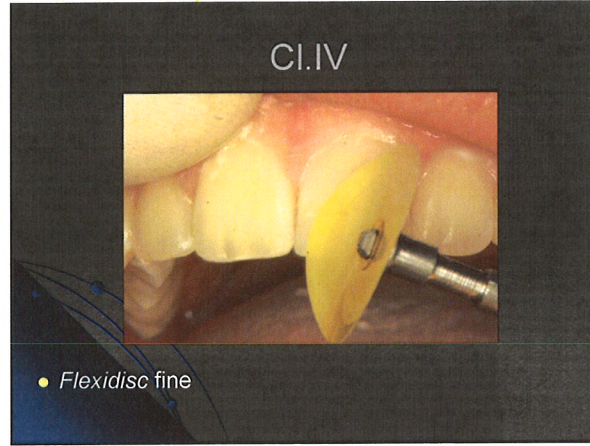
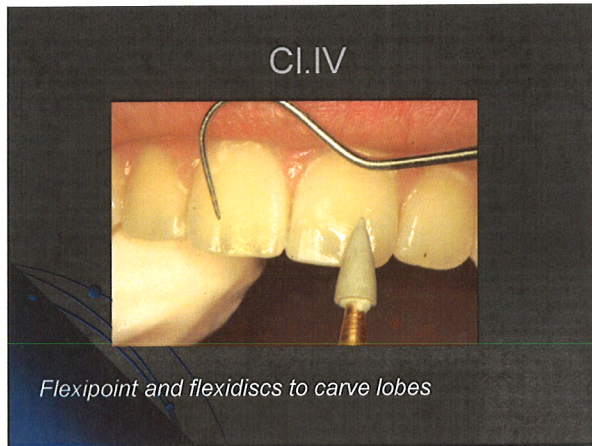


Ensure frosted appearance after etch









## Hands-on Cl.IV Steps

- Long bevel
- Etch
- Adhesive
- Microhybrid A1 on lingual
- Microfill A1
- Violet or grey tint (light touch)
- Incisal light
- Finishing (ET-9 burr)
- Polishing with all Cosmedent disks
- Final polish with « Flexibuff » and «Enamelize »